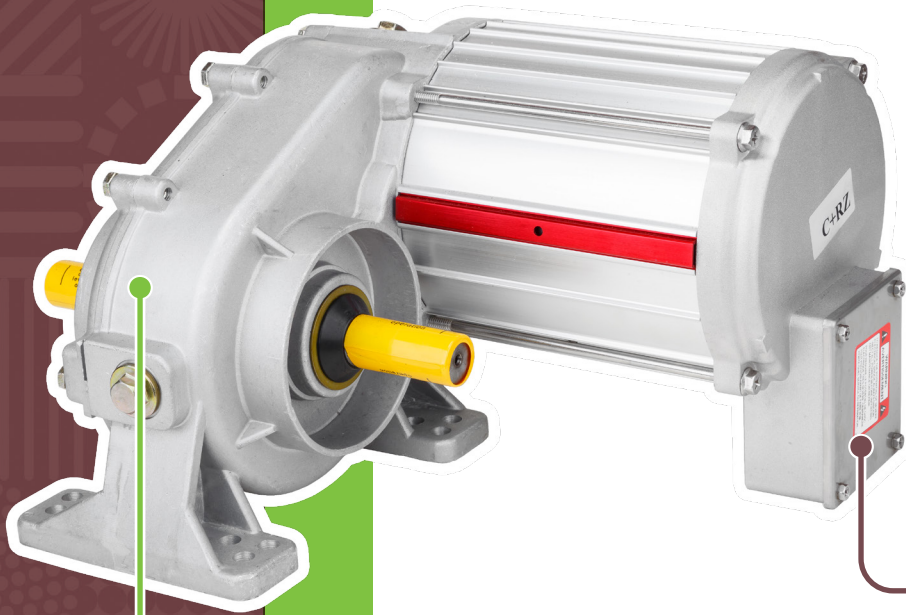


## The most efficient gear motor for centre pivots and lateral movement irrigation systems.

The three-phase or inverter-powered electric gear motor is designed to operate with universal power sources, at voltages of 460V-60Hz or 380V-50Hz.

Combined with a wide range of low-speed gears, the CE-certified electric gear motor allows farmers precise irrigation, while saving energy.



### Tight sealing:

The gear motor is made up of specially designed dual inlet and outlet gaskets, while TFE sheaths surround each class H motor winding cable. These sheaths make it possible to use smaller generators and power cables. All electrical connections are also protected from humidity by PD capsules.

The universal fastening system fits with bolts of type (3 3/8" x 6 3/8"), (4 3/4" x 7 1/4") and (5" x 6").  
Class F insulation

### Materials for optimal efficiency:

The stator and housing are made of aluminium for better cooling, longer life expectancy and increased resistance to corrosion. The shaft owes its strength to its hardened steel structure. The electrical junction box plate is also made of stainless steel.

### Made-to-measure elements:

The gear motor is built on helical straight-toothed wheels available in several ratios.

### Thermal protection:

The gearmotor is protected against thermal overload. The system can be reset in easily access junction box.

### The little extra

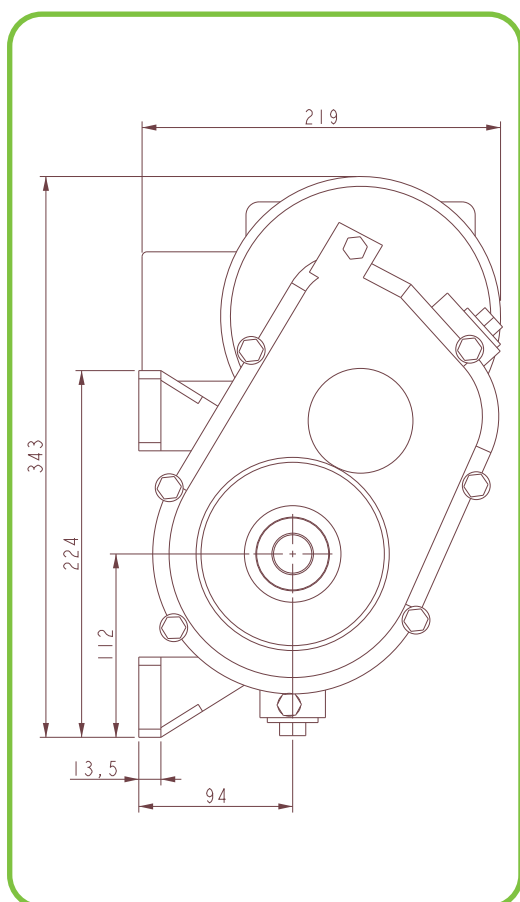
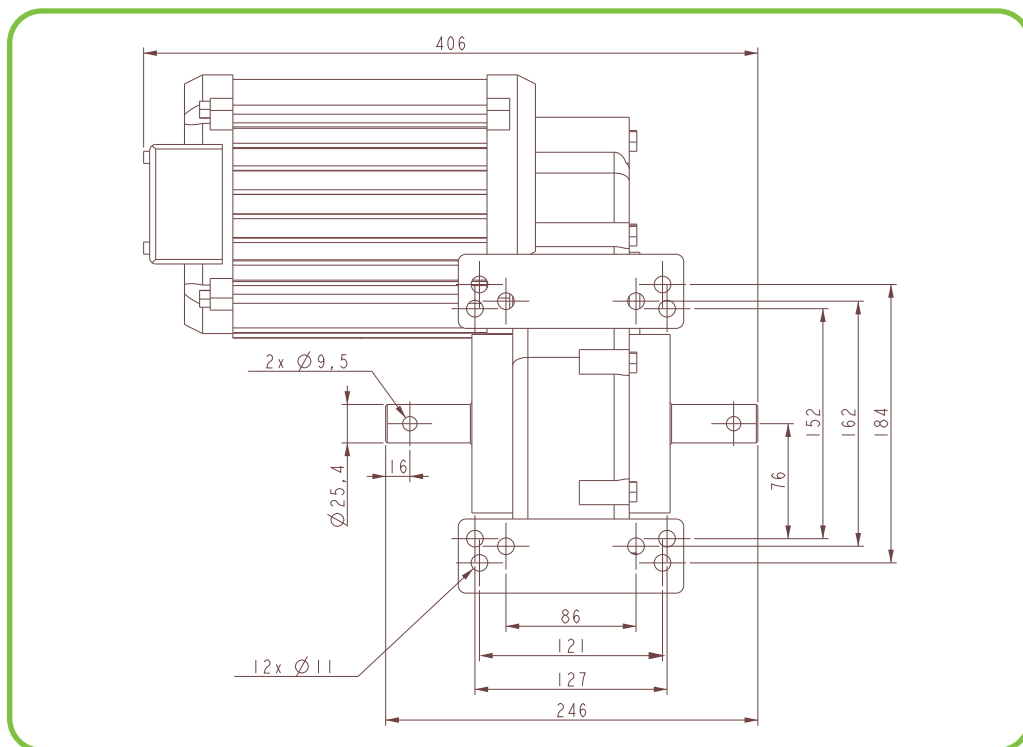
The filler cap is positioned so as to reach the correct oil level.

# CENTER DRIVE GEAR MOTOR



**OTECH**  
LEADING IRRIGATION

## Dimensional Drawing



Ratio	30:1	40:1
<b>Motor HP</b>	1 1/2 HP	3/4 HP
<b>Service Factor</b>	1.1	1.3
<b>Voltage AC</b>	460 /380	460 /380
<b>Input (RPM)</b>	1745 / 1425 RPM	1745 / 1425 RPM
<b>Output (RPM)</b>	58 / 48 RPM	44 / 35 RPM
<b>Full load amp</b>	2.4 A / 2.7 A	1.4 A / 1.5 A
<b>No load amp</b>	1.3 A / 1.4 A	1.0 A / 1.1 A
<b>Full LD torque motor</b>	4.577 LB-FT	2.30 LB-FT
<b>Breakdown torque motor</b>	18.92 LB-FT	13.39 LB-FT
<b>Lock rotor amp</b>	16.36 Amp	9.60 Amp
<b>Lock rotor TQE motor</b>	19.98 LB-FT (437%)	10.83 LB-FT (471%)



**OTECH**  
LEADING IRRIGATION

120 chemin de la sablière  
64270 Puyoô - France

Tel. : +33 559 651 219  
Fax : +33 559 652 005

otech-sa@otech.fr  
www.otech.fr