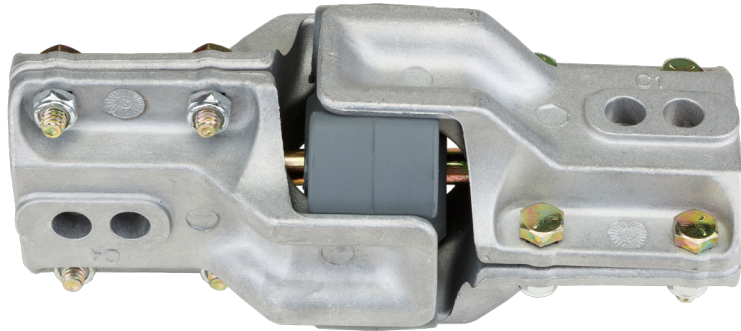


The CPL - M standard cardan shaft is an insert drive link between the gear motor and the final gearbox.

Its properties allow smooth use even in extreme conditions.



Use in extreme conditions

The standard cardan shaft is designed to be the fusible link in the driveline, to prevent breakage in the final gearbox or other equipment under difficult field conditions. It is especially ideal for use with high torque at low speed, as well as hard reversing.

It is suitable for heavy soils, wide tyre systems, higher engine torques and stronger cardan shafts: heavy load conditions capture and compress the lobes of the insert rather than shearing them, and the insert dampens jolts to allow smoother starting and stopping.

Design for optimum reliability

The internal axis of this standard cardan shaft maintains a central position under heavy loads.

The urethane insert provides a stable material for any type of environment with better UV and chemical resistance. With its optimal properties, the urethane insert provides protection and prevents dust, stones, sand and other foreign objects entering the cardan shaft in a more durable way, as it is resistant to UV and chemicals. SQUEX bolts, recognisable by their square neck and hexagonal head, provide an anti-rotation feature which enables faster assembly in the field using just a wrench.

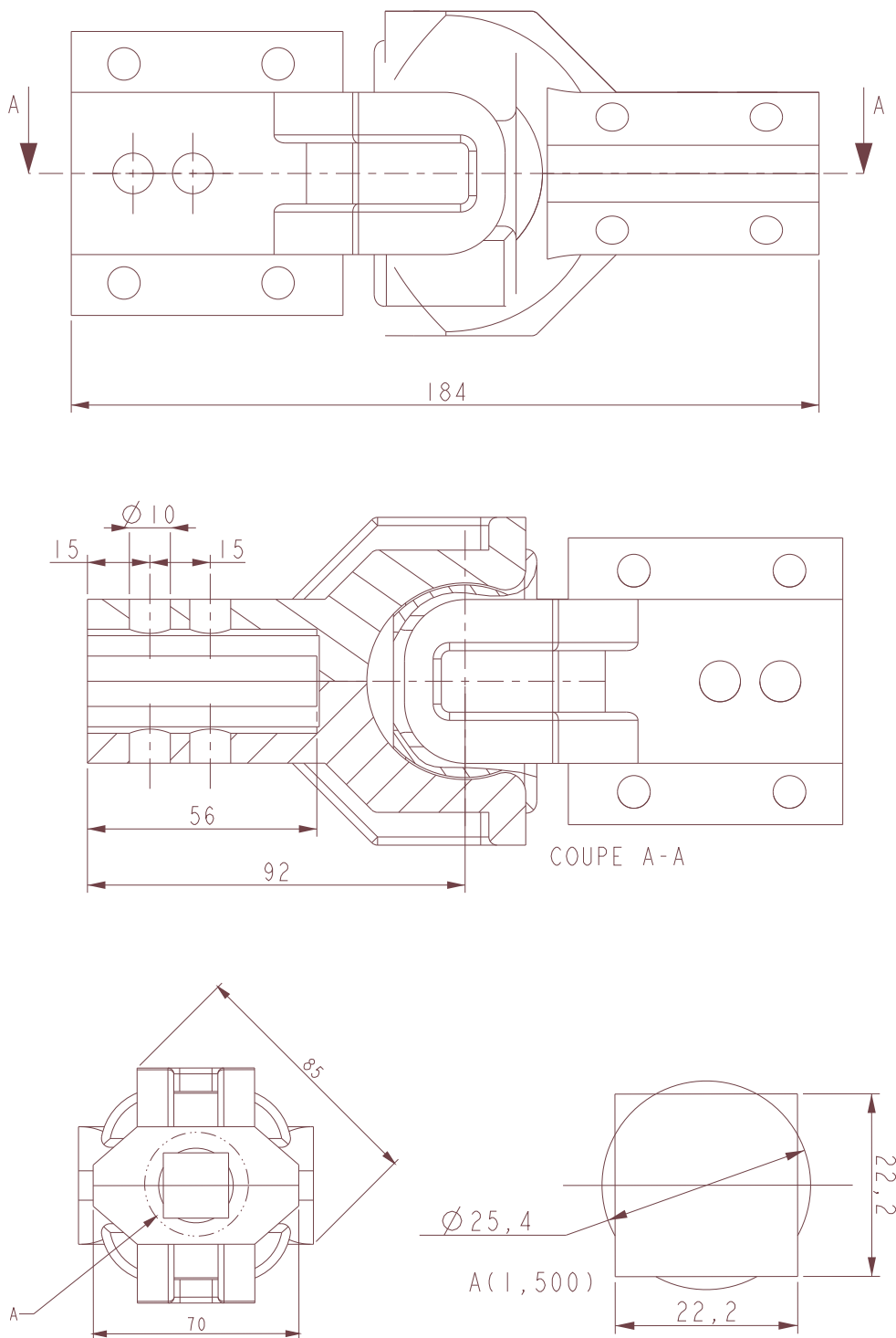
FP0024EN
UK

STANDARD COUPLER CPL-M



OTECH
LEADING IRRIGATION

Dimensional Drawing



NOTE

The right type with our pivots:

Model
CPL-M

Description
1" rd. x 7/8" sq.



OTECH

LEADING IRRIGATION

120 chemin de la sablière
64270 Puyoô - France

Tel. : +33 559 651 219

Fax : +33 559 652 005

otech-sa@otech.fr
www.otech.fr